

# 570W

**GB**  
Series



Higher power generation better LCOE



n-type with very low LID



Better temperature coefficient



Better low irradiance response



12-year product warranty



30-year linear power output warranty

## n-type Bifacial Double Glass High Efficiency Mono Module JAM72D40 GB/1500V

# 555-580

### Comprehensive Certificates

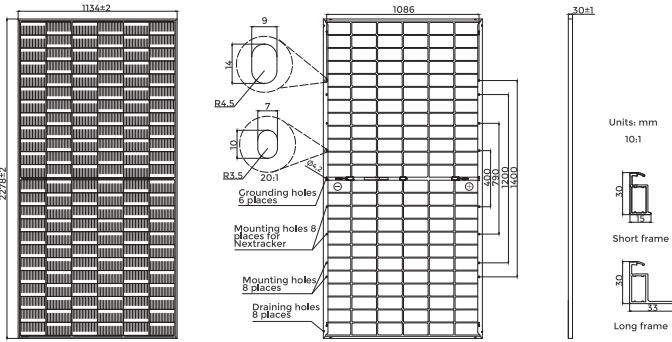
- IEC 61215, IEC 61730
- ISO 9001: 2015 Quality management systems
- ISO 14001: 2015 Environmental management systems
- ISO 45001: 2018 Occupational health and safety management systems





**555-580**  
**JAM72D40**

**GB**  
 Series



Remark: customized frame color and cable length available upon request

Cell	Mono-16BB
Weight	31.8kg
Dimensions	2278±2mm×1134±2mm×30±1mm
Cable Cross Section Size	4mm <sup>2</sup> (IEC), 12 AWG(UL)
No. of cells	144(6×24)
Junction Box	IP68, 3 diodes
Connector	Stäubli MC4-EVO2A/MC4-EVO2 QC Solar QC 4.10-351/QC 4.10-35
Cable Length (Including Connector)	Portrait: 300mm(+)/400mm(-); 800mm(+)/800mm(-)(Leapfrog) Landscape: 1300mm(+)/1300mm(-)
Front Glass/Back Glass	2.0mm/2.0mm
Country of Manufacturer	China/Vietnam

**ELECTRICAL PARAMETERS AT STC**

TYPE	JAM72D40-555/GB/1500V	JAM72D40-560/GB/1500V	JAM72D40-565/GB/1500V	JAM72D40-570/GB/1500V	JAM72D40-575/GB/1500V	JAM72D40-580/GB/1500V
Rated Maximum Power(Pmax) [W]	555	560	565	570	575	580
Open Circuit Voltage(Voc) [V]	50.85	51.08	51.30	51.52	51.73	51.95
Maximum Power Voltage(Vmp) [V]	43.00	43.21	43.42	43.62	43.82	44.02
Short Circuit Current(Isc) [A]	13.59	13.64	13.69	13.74	13.79	13.84
Maximum Power Current(Imp) [A]	12.91	12.96	13.01	13.07	13.12	13.17
Module Efficiency [%]	21.5	21.7	21.9	22.1	22.3	22.5
Power Tolerance	0~+5W					
Temperature Coefficient of Isc(α <sub>Isc</sub> )	+0.046%/C					
Temperature Coefficient of Voc(β <sub>Voc</sub> )	-0.260%/C					
Temperature Coefficient of Pmax(γ <sub>Pmp</sub> )	-0.300%/C					
STC	Irradiance 1000W/m <sup>2</sup> , cell temperature 25 C, AM1.5G					

Remark: Electrical data in this catalog do not refer to a single module and they are not part of the offer. They only serve for comparison among different module types.  
 Measurement tolerance at STC: Pmax ±3%, Voc ±3% and Isc ±5%.

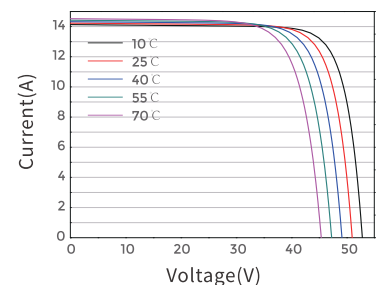
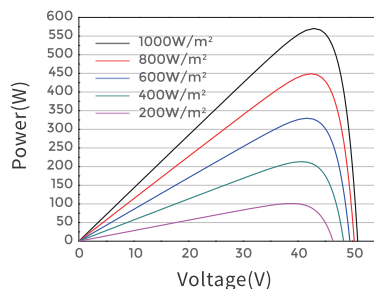
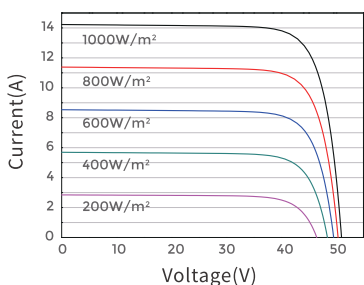
**ELECTRICAL CHARACTERISTICS WITH 10% SOLAR IRRADIATION RATIO**

TYPE	JAM72D40-555/GB/1500V	JAM72D40-560/GB/1500V	JAM72D40-565/GB/1500V	JAM72D40-570/GB/1500V	JAM72D40-575/GB/1500V	JAM72D40-580/GB/1500V
Rated Max Power(Pmax) [W]	599	605	610	616	621	626
Open Circuit Voltage(Voc) [V]	50.58	51.08	51.30	51.52	51.73	51.95
Max Power Voltage(Vmp) [V]	43.00	43.21	43.42	43.62	43.82	44.02
Short Circuit Current(Isc) [A]	14.68	14.73	14.79	14.84	14.89	14.95
Max Power Current(Imp) [A]	13.94	14.00	14.05	14.11	14.17	14.23
Irradiation Ratio (rear/front)	10%					

\*For NextTracker installations, maximum static load please take compatibility approve letter between JA Solar and NextTracker for reference.  
 \*\*Bifaciality=Pmax, rear/Rated Pmax, front

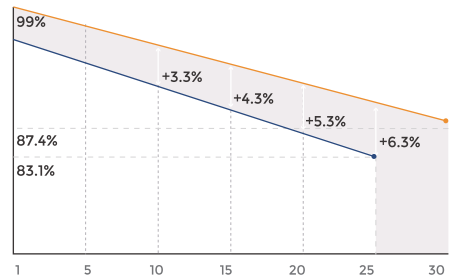
**CHARACTERISTICS**

Current-Voltage Curve **JAM72D40-570/GB/1500V** Power-Voltage Curve **JAM72D40-570/GB/1500V** Current-Voltage Curve **JAM72D40-570/GB/1500V**



**Superior Warranty**

1% 1st-year Degradation  
 0.4% Annual Degradation Over 30 years



- n-type Bifacial Double Glass Module Linear Performance Warranty
- Standard Module Linear Performance Warranty

**OPERATING CONDITIONS**

Maximum System Voltage	1500V DC
Operating Temperature	-40 C ~+85 C
Maximum Series Fuse Rating	30A
Maximum Static Load, Front*	3600Pa, 1.5
Maximum Static Load, Back*	1600Pa, 1.5
NOCT	45±2 C
Bifaciality**	80%±10%
Fire Safety Class	Class C