



390W PERC Black Module

JAM72S02 370-390/PR/1000V Series

Introduction

Powered by high-efficiency PERCIUM cells, this series of high-performance modules provides the most cost-effective solution for lowering the LCOE of any PV systems large or small.



5 busbar solar cell design



Higher output power



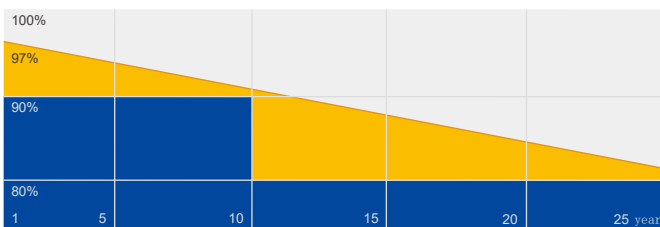
Excellent low-light performance



Lower temperature coefficient

Superior Warranty

- 12-year product warranty
- 25-year linear power output warranty



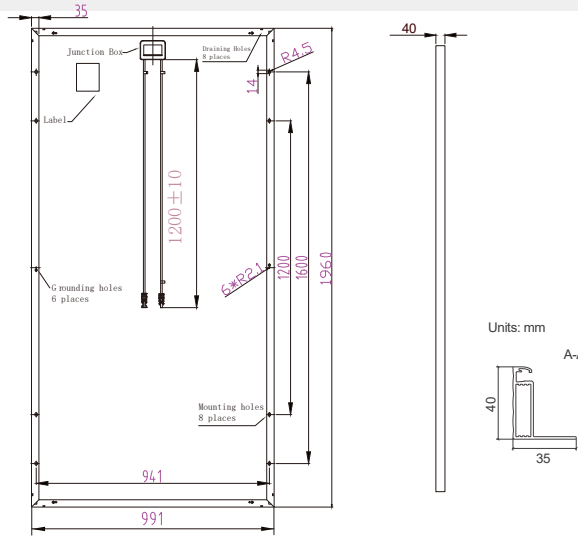
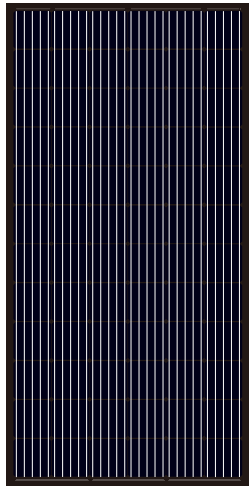
■ JA Linear Power Warranty ■ Industry Warranty

Comprehensive Certificates

- IEC 61215, IEC 61730
- ISO 9001: 2015 Quality management systems
- ISO 14001: 2015 Environmental management systems
- OHSAS 18001: 2007 Occupational health and safety management systems



MECHANICAL DIAGRAMS



Remark: customized frame color and cable length available upon request

SPECIFICATIONS

Cell	Mono
Weight	22kg±3%
Dimensions	1960mm×991mm×40mm
Cable Cross Section Size	4mm ²
No. of cells	72(6x12)
Connector	Genuine MC4 QC4.10
Country of Manufacturer	China/Vietnam

ELECTRICAL PARAMETERS AT STC

TYPE	JAM72S02-370 /PR/1000V	JAM72S02-375 /PR/1000V	JAM72S02-380 /PR/1000V	JAM72S02-385 /PR/1000V	JAM72S02-390 /PR/1000V
Rated Maximum Power(Pmax) [W]	370	375	380	385	390
Open Circuit Voltage(Voc) [V]	48.18	48.45	48.71	48.98	49.28
Maximum Power Voltage(Vmp) [V]	39.45	39.75	40.03	40.29	40.61
Short Circuit Current(Isc) [A]	9.91	9.98	10.05	10.11	10.16
Maximum Power Current(Imp) [A]	9.38	9.44	9.50	9.56	9.61
Module Efficiency [%]	19.0	19.3	19.6	19.8	20.1
Power Tolerance	0~+5W				
Temperature Coefficient of Isc(α_{Isc})	+0.060%/°C				
Temperature Coefficient of Voc(β_{Voc})	-0.300%/°C				
Temperature Coefficient of Pmax(γ_{Pmp})	-0.380%/°C				
STC	Irradiance 1000W/m ² , cell temperature 25°C, AM1.5G				

Remark: Electrical data in this catalog do not refer to a single module and they are not part of the offer.They only serve for comparison among different module types.

ELECTRICAL PARAMETERS AT NOCT

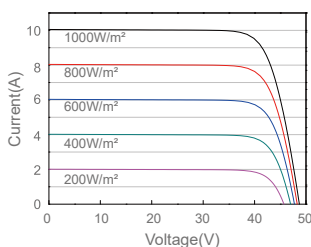
TYPE	JAM72S02-365/PR/1000V	JAM72S02-375/PR/1000V	JAM72S02-380/PR/1000V	JAM72S02-385/PR/1000V	JAM72S02-390/PR/1000V
Rated Max Power(Pmax) [W]	272	276	279	283	287
Open Circuit Voltage(Voc) [V]	44.55	44.81	45.09	45.38	45.66
Max Power Voltage(Vmp) [V]	36.50	36.75	36.99	37.23	37.47
Short Circuit Current(Isc) [A]	7.86	7.91	7.96	8.01	8.06
Max Power Current(Imp) [A]	7.45	7.50	7.55	7.60	7.65
NOCT	Irradiance 800W/m ² , ambient temperature 20°C, wind speed 1m/s, AM1.5G				

OPERATING CONDITIONS

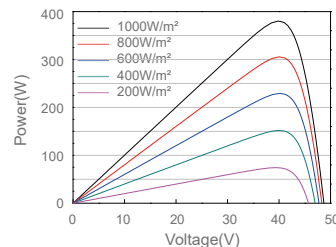
Maximum System Voltage	1000V DC(IEC)
Operating Temperature	-40°C~+85°C
Maximum Series Fuse	20A
Maximum Static Load,Front	3600Pa, 1.5
Maximum Static Load,Back	1600Pa, 1.5
NOCT	45±2°C
Application Class	Class A

CHARACTERISTICS

Current-Voltage Curve JAM72S02-380/PR/1000V



Power-Voltage Curve JAM72S02-380/PR/1000V



Current-Voltage Curve JAM72S02-380/PR/1000V

